



FRONT RUNNER

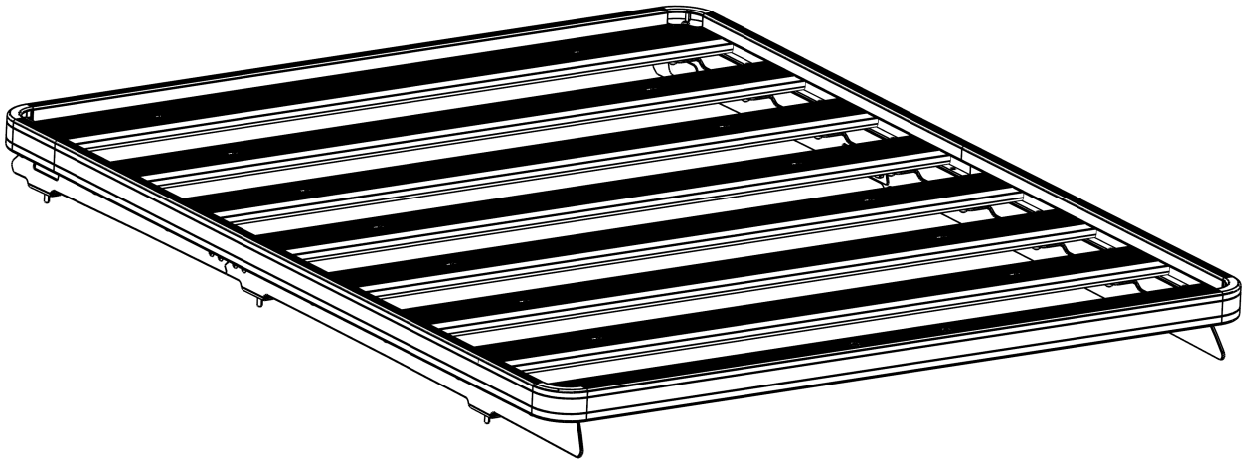
**LAND ROVER DISCOVERY 3&4
SLIMLINE II RACK
(1255MM X 1560MM)**

ENG

FALD002 / KRLD023T



INSTALL TIME: 60 mins



READ ME FIRST:

Thank you for purchasing a Front Runner Slimline II Rack.

This Roof Rack consists of a kit that contains:

- 1.) A Slimline II Tray
- 2.) A mounting system specific to your vehicle

This document will help you fit the Slimline II Tray to your specific vehicle.

IMPORTANT WARNING!

IT IS CRITICAL THAT ALL FRONT RUNNER PRODUCTS BE PROPERLY AND SECURELY ASSEMBLED AND ATTACHED TO YOUR VEHICLE. IMPROPER ATTACHMENT COULD RESULT IN AN AUTOMOBILE ACCIDENT, AND COULD CAUSE SERIOUS BODILY INJURY OR DEATH TO YOU OR TO OTHERS. YOU ARE RESPONSIBLE FOR ASSEMBLING AND SECURING ALL FRONT RUNNER PRODUCTS TO YOUR VEHICLE, CHECKING THE ATTACHMENTS PRIOR TO USE, AND PERIODICALLY INSPECTING THE PRODUCTS FOR ADJUSTMENT, WEAR, AND DAMAGE. THEREFORE, YOU MUST READ AND UNDERSTAND ALL OF THE INSTRUCTIONS AND CAUTIONS SUPPLIED WITH YOUR FRONT RUNNER PRODUCT PRIOR TO INSTALLATION OR USE. IF YOU DO NOT UNDERSTAND ALL OF THE INSTRUCTIONS AND CAUTIONS, OR IF YOU HAVE NO MECHANICAL EXPERIENCE AND ARE NOT THOROUGHLY FAMILIAR WITH THE INSTALLATION PROCEDURES, YOU SHOULD HAVE THE PRODUCT INSTALLED BY A PROFESSIONAL INSTALLER OR OTHER QUALIFIED PERSONNEL.

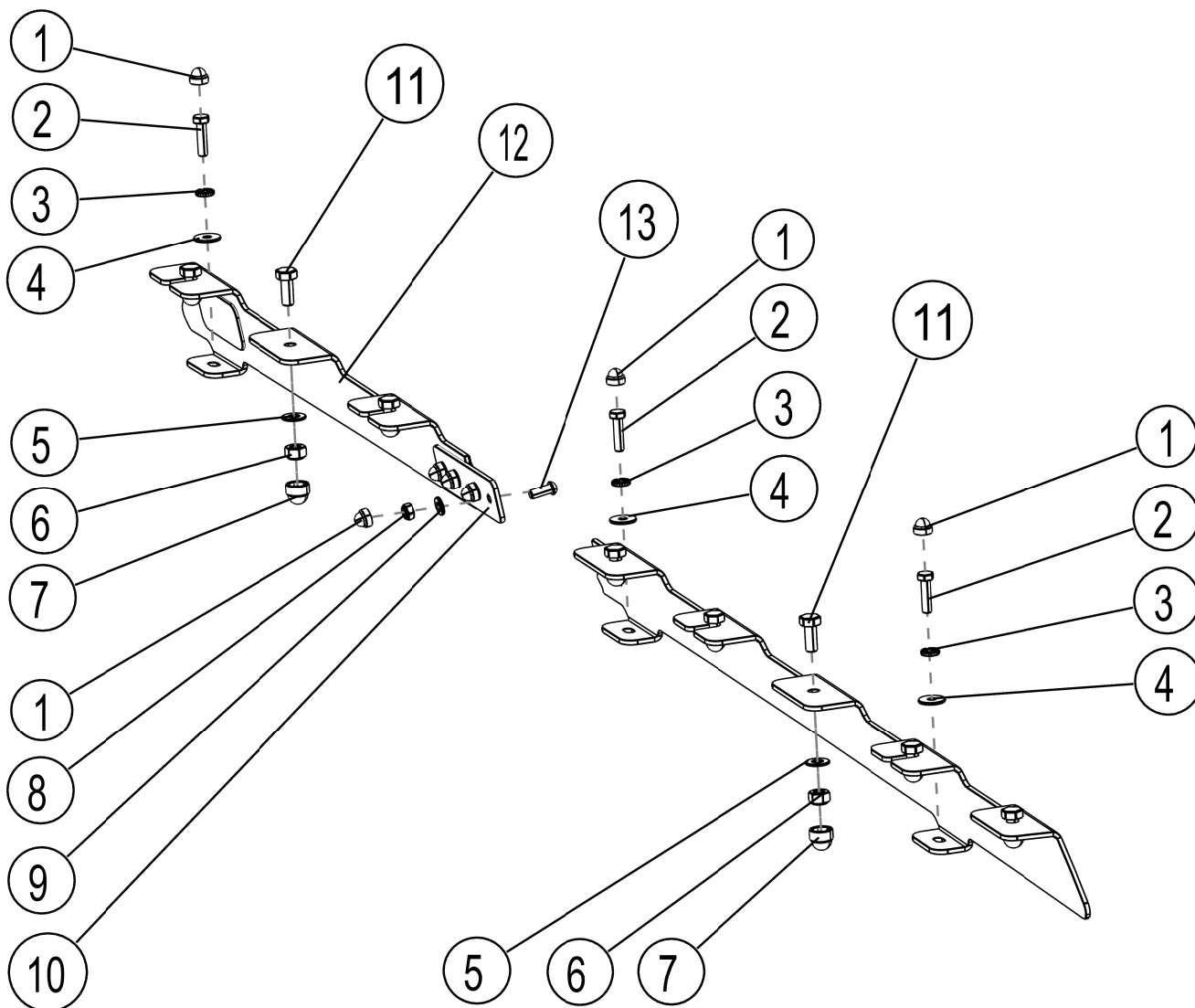
1 GET ORGANIZED...

Here is what you are looking at: Please note that only the right hand side's components and fitment has been shown.

You will need:

- 13 mm Flat and Socket Wrench
- 10 mm Flat and Socket Wrench
- 4 mm Hex Key
- Ladder
- Measuring Tape
- Small Flat Screw Driver
- T27 Torx Bit
- Friend

Item #	Quantity	Description
1	7	M6 NUT CAP
2	3	M6x25 HEX BOLT
3	3	M6 SPRING WASHER
4	3	M6x19 FLAT WASHER
5	8	M8 FLAT WASHER
6	8	M8 NYLOC NUT
7	8	M8 NUT CAP
8	4	M6 NYLOC NUT
9	4	M6 FLAT WASHER
10	1	JOINER PLATE
11	8	M8x20 HEX BOLT
12	1	FOOT RAIL - 1 FRONT, 1 REAR
13	4	M6x16 BUTTON HEAD BOLT



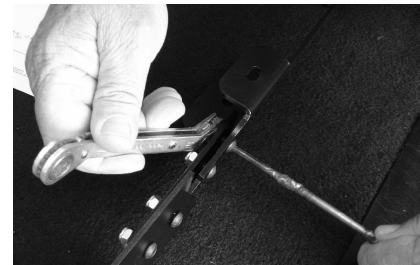
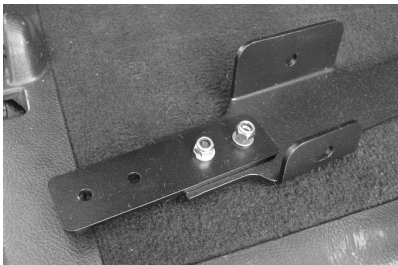
(A) Familiarize yourself with the parts and then step away from the work area and read through these instructions from beginning to end. Take a moment as a little prep now may save you a lot of time later.

2 FIT THE FOOT RAILS

- (A) Using your Torx Wrench, loosen and remove the two original tracks if fitted.



- (B) Loosely join the Front and Rear Foot Rails together using the M6x16 Button Head Bolts, M6 Flat Washers and M6 Nyloc Nuts (Items 8, 9, 10) supplied.



Only complete Step 2C if your vehicle did not come fitted with the original tracks referred to in Step 2A.

- (C) Remove the rear section of ditch moulding from the vehicle's roof. Place the assembled Foot Rails onto the vehicle (Product sticker goes to the front and outside of the vehicle), lining up the mounting holes in the Foot Rail with the mounting holes in the vehicle's roof. Loosely fasten the front and rear mounting feet of the Foot Rail to the vehicle using the M6 x 25 Hex Bolts, M6 x 19 Flat Washers and M6 Spring Washers (Items 2, 3, 4) supplied.

Place the ditch moulding next to the Foot Rails, lining the ditch moulding up front to rear with its original position. Mark the position (front and rear) of the three mounting feet onto the ditch moulding. Remove the foot rail and ditch moulding. Cut the ditch moulding on your markings and discard the pieces where the mounting feet sit. Reposition the ditch moulding pieces in their original position, leaving gaps where the Foot Rails mounting feet are positioned. Continue from Step 2D.

2 FIT THE FOOT RAILS

- (D) Place the assembled Foot Rail onto the vehicle lining up the mounting holes in the Foot Rail with the mounting holes in the roof. Starting from the front, loosely fasten the Foot Rail to the vehicle using the M6 x 25 Hex Bolts, M6 x 19 Flat Washers and M6 Spring Washers (Items 2, 3, 4) supplied. Line up the joint from Step 2B and fasten. Tighten all bolts securing the Foot Rail to the vehicle and fit the M6 Nut Caps supplied.

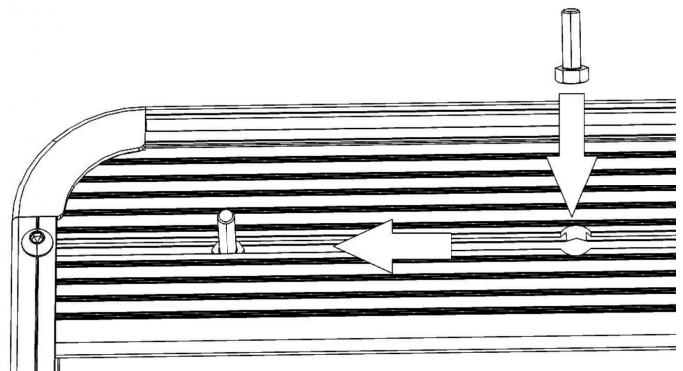


3 FIT THE RACK



Note: If your Slimline II Tray is not already assembled, assemble it as per the Slimline II Tray Universal Assembly Instruction (Document RRSUNI). Read Step 3A before fitting the Wind Deflector

- (A) Before fitting the Wind Deflector, and with the Rack in the upside down position, (Check with product sticker. It should be upside down), slide a M8x20 Hex Bolt into each end of the First Slat using the machined slot as shown.



3 FIT THE RACK CONT...

- (B) With your rack still upside down from Step 3A, slide a M8x20 Hex Bolt into the end of each Slat.

Grab your Friend and with one of you on each side of the Rack, flip the Rack end over end (Prevents the Hex Bolts from falling out the machined slots) so that the M8x20 Hex Bolts are facing down. Approach the vehicle from the rear, with the Wind Deflector facing forward. Lift the Rack up and over the Roof positioning it above the Foot Rail. Bring the Rack down slowly, lining up the Bolts in the Rack with the holes in the top of the Foot Rail. Hand tighten the Rack to the Foot Rail using the M8 Washers and M8 Nyloc Nuts supplied.

Center the rack - left to right (check using a tape measure). Fasten all the Nuts securing the Rack to the Foot Rail. Cover the M8 Nyloc Nuts with the M8 Nut Caps supplied

Congratulations, you have completed your installation. Take a step back and admire your work. Good Job!



4 TAKE A TRIP

- (A) After your first adventure, check that all nuts, bolts, screws and fittings are tight. Re-tighten where needed. You'll find a small amount of settling has happened.

Go on many more adventures, periodically checking all nuts, bolts, screws and fittings.



Front Runner can not recommend a maximum load carrying capacity. Please refer to your vehicle manufacturer's recommendations.